

MADE

27 Vale Road

, St. Leonards-On-Sea, TN37 6PT

Offers in excess of £485,000



27 Vale Road

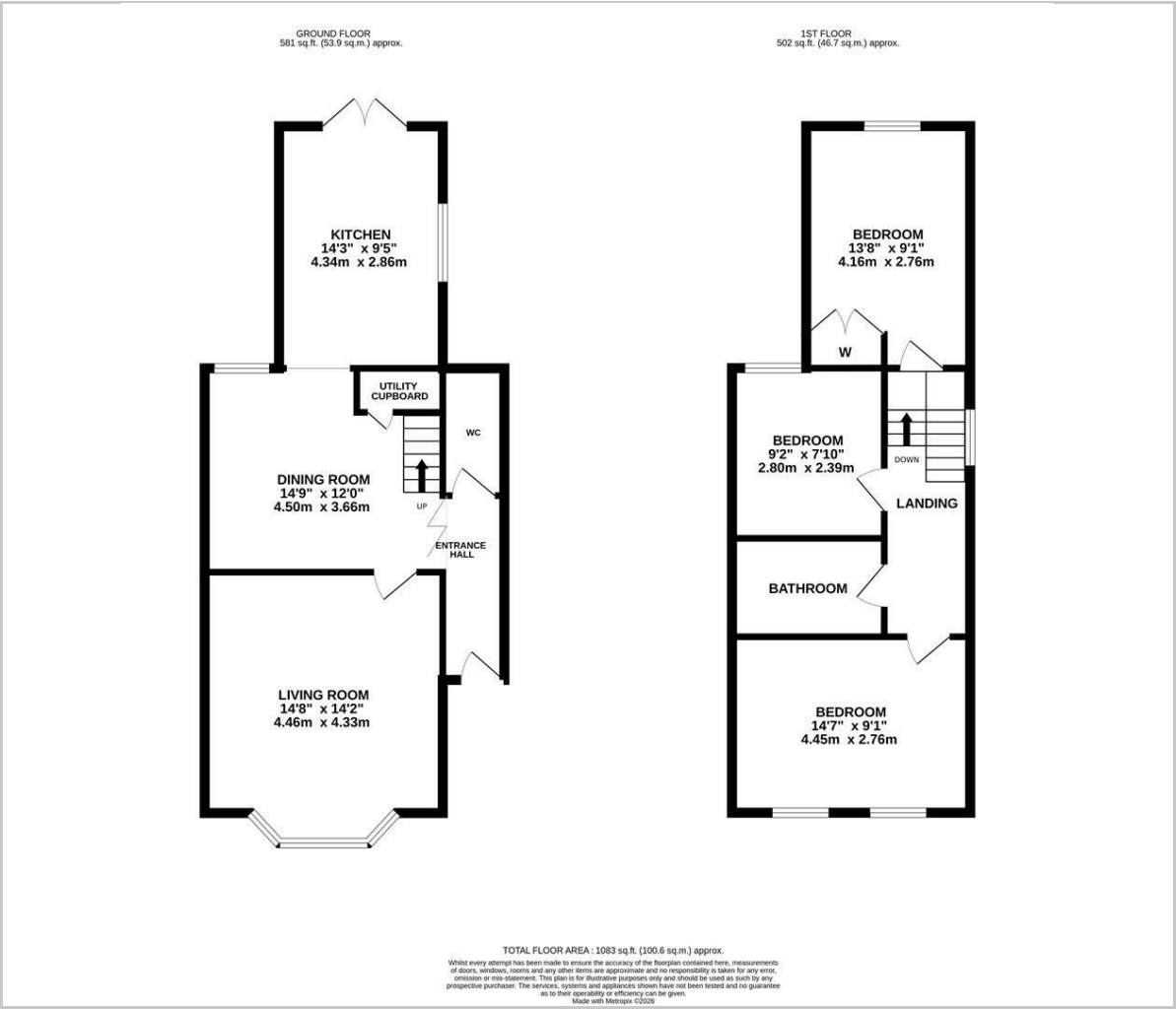
, St. Leonards-On-Sea, TN37 6PT

A beautifully presented three bedroom, TWO RECEPTION ROOM Victorian family home occupying an enviable Silverhill location, JUST MOMENTS FROM ALEXANDRA PARK. There are local shops within walking distance along with great transport links and popular schools. You enter on the ground floor in to a welcoming entrance hall with a w/c where the accommodation is arranged as a bright, BAY FRONTED LIVING ROOM with a feature fireplace fitted with a WOOD-BURNING STOVE, there is a separate dining room with a lovely outlook of the garden and this leads through to the kitchen which is positioned at the rear of the house with double doors leading outside. The kitchen is FITTED WITH MODERN UNITS offering ample storage and worktop space. There is also a UTILITY CUPBOARD with power and plumbing for a washing machine. The first floor houses THREE DOUBLE BEDROOMS together with a STYLISH FAMILY BATHROOM where there is a shower over the bath. Externally the level rear garden benefits from GATED SIDE ACCESS and is mainly laid to lawn with TWO DETACHED GARDEN STUDIOS with power providing the perfect space to work from home. At the front of the house there is a driveway with OFF ROAD PARKING FOR TWO VEHICLES.





Floor Plan



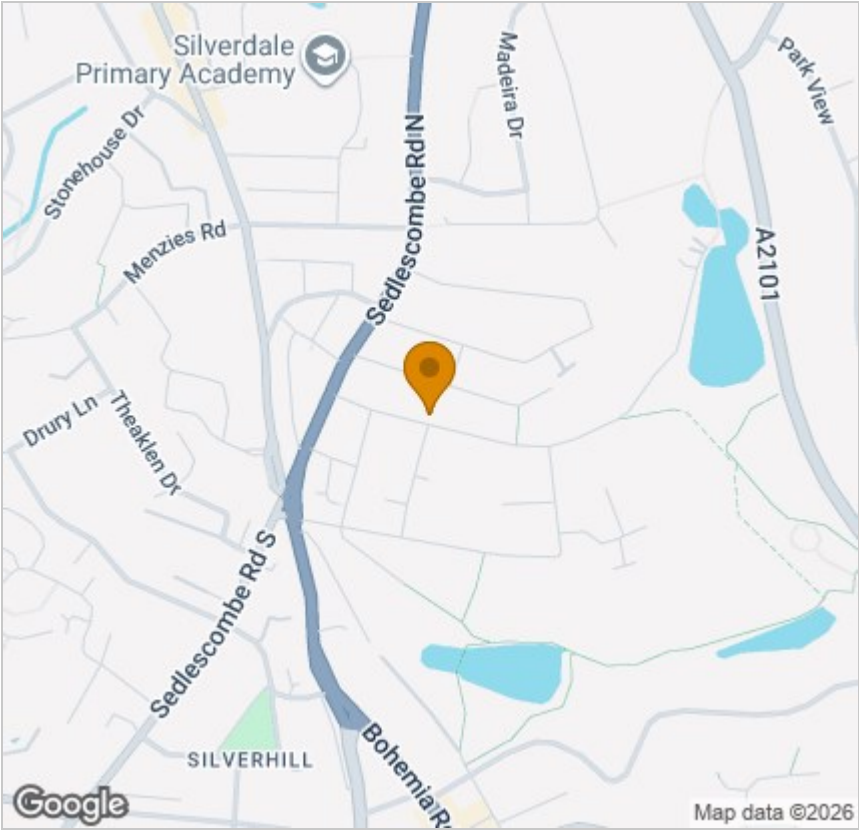
Viewing

Please contact our Hastings Office on 01424 444700 if you wish to arrange a viewing appointment for this property or require further information.

These particulars, whilst believed to be accurate are set out as a general outline only for guidance and do not constitute any part of an offer or contract. Intending purchasers should not rely on them as statements of representation of fact, but must satisfy themselves by inspection or otherwise as to their accuracy. No person in this firms employment has the authority to make or give any representation or warranty in respect of the property.

24 Havelock Road, Hastings, East Sussex, TN34 1BP
Tel: 01424 444700 Email: hello@madehastings.co.uk <https://www.madehastings.co.uk>

Area Map



Energy Efficiency Graph

